

# CLENCHWARTON PARK AREA REGENERATION

Minutes of the Working Party Meeting held on

Wednesday 9<sup>th</sup> August 2023 7pm

Online Zoom Meeting

**Present:** Chair Cllr Rob Lucas (RL), Bryan Coates (BC), Cllr Caroline Coates (CC), Julie Hallifax (JH) & Cllr Steve Fox (SF)

## Agenda Items

**1. Apologies for absence:**

Tracy Wilson

**2. To agree minutes from the meeting held on Wednesday 19<sup>th</sup> July 2023:** Approved with no amendments.

**3. To receive a Finance report:**

No Finance report was given and was deferred to the next meeting.

SF reported that TW is now a signatory for the bank account and currently there is a balance of £1,128.39.

**4. To agree a new date for the Picnic in the Park:**

It was agreed to provisionally set a new date for Saturday 9<sup>th</sup> September. CC will contact Ben Hails (Clenchwarton Football Club) and Ben Duncan (BTS Roadshow) to arrange a meeting with them and CPAR to decide on a layout and plan if football matches take place on that day.

**5. To receive a Jubilee Garden update:**

CW will be purchasing a boulder for the garden for which CPAR will refund him and make a donation towards his fuel costs in collecting it.

The three wheelchair-accessible picnic benches have now been purchased. Two of the picnic benches will be situated on a concrete base on the grass area opposite of the disabled gate leading into the play area. CPAR will request permission from the Clenchwarton Parish Council to install a picnic bench in the play area and if it can go on a concrete base.

For the concrete bases, we will need 0.9 cubic metres of concrete, 100mm depth of type 1 hardcore, 150mm concrete depth, shuttering 4 x 1 and 20mm x 50mm batons. It was agreed that the concrete bases will be square.

JH proposed CPAR install some SENCO equipment for children who require a quieter environment. It was agreed that CPAR will investigate this.

- 6. To discuss projects for approval from the Clenchwarton Parish Council:**  
It was agreed to present the attached Green Space Proposal to the Clenchwarton Parish Council.
  
- 7. To go through the CIO application:**  
It was agreed for available CPAR members to meet and complete the CIO application with RL on Monday 14<sup>th</sup> August at 6.30pm.
  
- 8. Any other business:**  
No other business.
  
- 9. To agree a date for the next meeting:**  
Tuesday 29<sup>th</sup> August 2023 7pm

# Utilising Clenchwarton Green Space

## 1. Introduction

This proposal has been developed and written by the Clenchwarton Park Area Regeneration Team (CPAR), a working party of the Clenchwarton Parish Council. The aim of this project is to revitalise and enhance Clenchwarton Park, transforming it into a vibrant, accessible, and welcoming green space for the community. By incorporating various improvements, CPAR seeks to create an inviting outdoor environment that encourages active use, fosters community cohesion, a healthier and more active lifestyle and embraces sustainable practices.

## 2. Research

### 2.1 Walking & Cycling Infrastructure

Improved cycling and walking infrastructure play a pivotal role in promoting sustainable transportation and encouraging outdoor activities. Norfolk County Council (NCC) is actively working on a Local Cycling and Walking Infrastructure Plan (LCWIP) to enhance active travel across the county. Clenchwarton has been identified as a prioritised scheme within the plan, with a focus on enabling residents to choose walking, cycling, or wheeling as alternatives to car travel, particularly for short journeys into and from King's Lynn, with easy access to green spaces.

### 2.2 Health & Wellbeing

According to the Office of National Statistics, in 2021/22 65.7% of adults aged over 18 and 43.3% of children aged 10-11 are suffering overweight in King's Lynn and West Norfolk. This is below the median for the area.

### 2.3 National Feedback

The Clenchwarton village is a close-knit community with diverse needs that can be effectively addressed by a community hub or drop-in centre. According to a recent study conducted by the Office for National Statistics in October 2022, the well-being of adults in Great Britain was most significantly influenced by family members and their welfare (45.5%) and physical or mental health (45.0%). This highlights the paramount importance of having accessible resources to support both family ties and mental and physical well-being within a community like Clenchwarton.

The study further reveals a notable trend regarding age-related differences in factors affecting wellbeing. As adults grow older, the percentage mentioning physical or mental health increases, underlining the growing significance of health-related support services in such a community. Conversely, the percentage mentioning friends or a community and relationships or social interactions decreases with age.

## Local Feedback

During the school's leavers gathering held at Clenchwarton Park on July 20th, 2023, parishioners expressed their feedback on the usage of facilities in the park, particularly seating and outdoor dining. When asked about potential locations for additional seating and picnic tables, several respondents emphasised that such an addition would be best served in the play area itself as well as in and around the car park end of the area. But also hoped that there would be an increase and utilisation of an existing pavilion building that currently sees little activity, being used only once or twice a week.

## 3. Objectives

The Clenchwarton Park Area Regeneration project aims to achieve the following key objectives:

### 3.1 Improved Quality Seating

The first objective is to provide enhanced and comfortable seating throughout the green space. Existing seating will be assessed for repair or replacement, and new seating areas will be strategically placed to maximise park usage. By offering well-maintained and aesthetically pleasing seating options, visitors can relax, enjoy the surroundings, and engage in social interactions with family and friends.

### 3.2 Disabled-Friendly Picnic Tables

To ensure inclusivity and accessibility, CPAR aims to install disabled-friendly picnic tables in Clenchwarton Park. These specially designed tables will accommodate wheelchair users and those with mobility aids, enabling them to fully enjoy outdoor picnics and gatherings. Creating an environment that caters to all members of the community is essential in fostering a sense of belonging and unity.

### 3.3 Recycling Bins

The installation of recycling bins within the park area is a critical step in promoting environmentally responsible behaviour. By providing convenient and easily accessible recycling facilities, CPAR aims to encourage park users to dispose of waste responsibly and participate in recycling efforts. This initiative will contribute to the reduction of litter and waste, making Clenchwarton Park a cleaner and greener space for everyone to enjoy.

### 3.4 Cycle Racks

In anticipation of the upcoming LCWIP, CPAR aims to introduce cycle racks in Clenchwarton Park. These cycle racks will encourage and facilitate active travel, making it easier for cyclists to visit the park and explore the surrounding areas. By promoting cycling as a sustainable mode of transportation, the project aligns with broader efforts to reduce carbon emissions and traffic congestion in the region.

## 4. Benefits of the Project

### 4.1 Community Engagement and Cohesion

By enhancing Clenchwarton Park's amenities, the project will attract more visitors, fostering a greater sense of community engagement and cohesion. Improved seating and picnic areas will provide opportunities for families and friends to gather, socialise, and enjoy recreational activities together, strengthening social ties within the community.

### 4.2 Accessibility and Inclusivity

Through the installation of disabled-friendly picnic tables and accessible facilities, the project will ensure that Clenchwarton Park becomes a space for all residents to enjoy, regardless of their physical abilities. This commitment to inclusivity will create a welcoming environment where everyone can participate in outdoor activities without barriers.

### 4.3 Environmental Sustainability

Introducing recycling bins will promote responsible waste disposal and environmental consciousness among park users. Encouraging recycling will reduce litter and contribute to the conservation of natural resources, aligning the park with broader sustainability goals.

### 4.4 Active Transportation

With the introduction of cycle racks, the project will actively promote cycling as an eco-friendly mode of transportation. As more people choose to cycle to the park and surrounding areas, there will be a positive impact on air quality and traffic congestion, supporting the broader goals of the LCWIP.

### 4.5 Economic Impact

A regenerated and vibrant Clenchwarton Park is likely to attract more visitors from neighbouring areas, positively impacting local businesses such as eateries, shops, and recreational providers. Increased footfall can contribute to a thriving local economy and potential job creation.

## 5. Budget and Timeline

The successful implementation of the Clenchwarton Park Area Regeneration project relies on a comprehensive budget and timeline. The CPAR team has meticulously planned the allocation of resources to ensure the project's efficient execution. This budget breakdown and timeline will be presented to the Clenchwarton Parish Council for approval before commencement.

### 5.1 Summary Expenditure

Item	Cost Ea.	Qty	Total
Cycle Racks (5 hoops)	£ 370.00	2	£ 740.00
Recycle Bin	£ 850.00	2	£ 1,700.00
Seating	£ 399.00	2	£ 798.00
Fixings	£ 14.00	3	£ 42.00
Picnic Tables	£ 595.00	2	£ 1,190.00
Fixings	£ 14.00	2	£ 28.00

#### Total Expenditure: £4,498.00 (Ex. VAT)

In the table above, we have listed the items purchased for the Clenchwarton Park Area Regeneration, along with their individual costs per unit (Cost Ea.), the quantity purchased (Qty), and the total cost for each item (Total). The calculations have been carried out for each row, and the totals have been summarized below:

- ✓ Total expenditure on Cycle Racks: £740.00
- ✓ Total expenditure on Recycle Bins: £1,700.00
- ✓ Total expenditure on Seating: £798.00
- ✓ Total expenditure on Fixings (Set 1): £42.00\*
- ✓ Total expenditure on Picnic Tables: £1,190.00
- ✓ Total expenditure on Fixings (Set 2): £28.00\*

\*Excludes the cost of materials for laying fixings.

### 5.2 Volunteer Man Hours

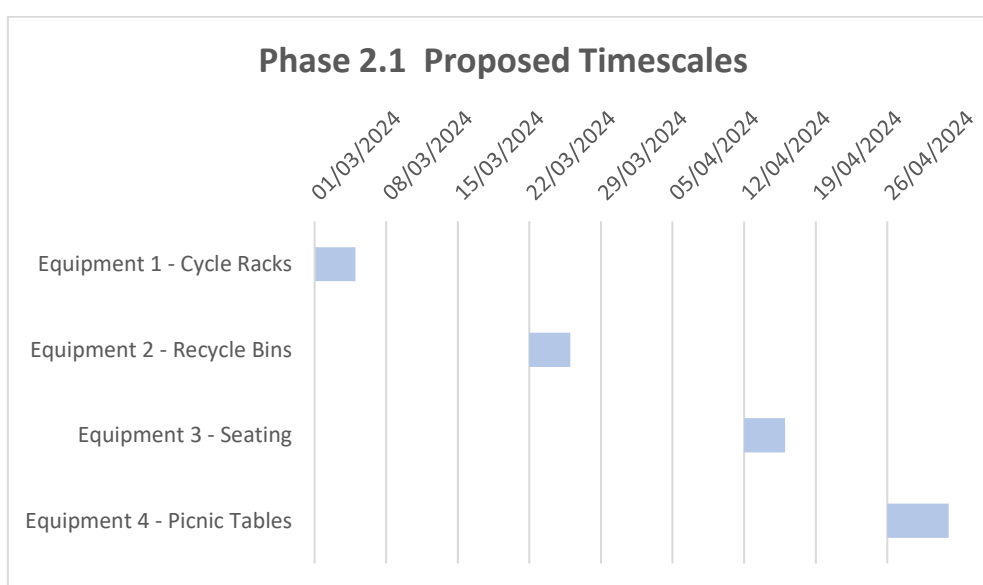
This section highlights the voluntary aspect of cost contribution by CPAR members and the community, underscoring their willingness to bear expenses to facilitate the deployment and installation of these items.

Volunteers Required	4		<b>Voluntary Rate</b>	£ 13.50	per hour
Hours Required	8	per item			
Total Man Hours	32	per item			
Number Pieces of Equipment	8				

Volunteers Required	4		
		<b>Voluntary Rate</b>	£ 13.50 per hour
Hours Required	8		per item
Total Man Hours	32		per item
Number Pieces of Equipment	8		
Total Man Hours	256	Complete Project	
Voluntary Value	£ 3,456.00		

### 5.3 Timescales

This is a proposed timescale for the installation of each type of equipment, times and dates are variants and subject to volunteers availability due to personal commitments.



## 6. Conclusion

In conclusion, the Clenchwarton Park Area Regeneration project is a promising endeavour that will transform the green space into a more accessible, usable, and welcoming environment for the community. By focusing on improved seating, disabled-friendly picnic tables, recycling bins, and cycle racks, CPAR aims to create a space that encourages community engagement, inclusivity, environmental sustainability, and active transportation. Through collaboration with the Clenchwarton Parish Council and the support of local residents, this project will breathe new life into Clenchwarton Park, making it a cherished outdoor sanctuary for generations to come.

This Report was compiled by the Clenchwarton Park Area Regeneration Team, a working party of Clenchwarton Parish Council

Compiled By: Rob Lucas MSc, MBCS

Chair – Clenchwarton Park Area Regeneration Team

Contact: [clenchwartonpar@gmail.com](mailto:clenchwartonpar@gmail.com)

Appendix 1 – Existing Equipment Location

# Existing Equipment Locations

2 x Picnic Tables (Jubilee Garden)



1 x Picnic Table (Park Area - Proposed)





Appendix 2 – New Equipment Proposed Location

